



RELIANCE
WATER HEATER COMPANY

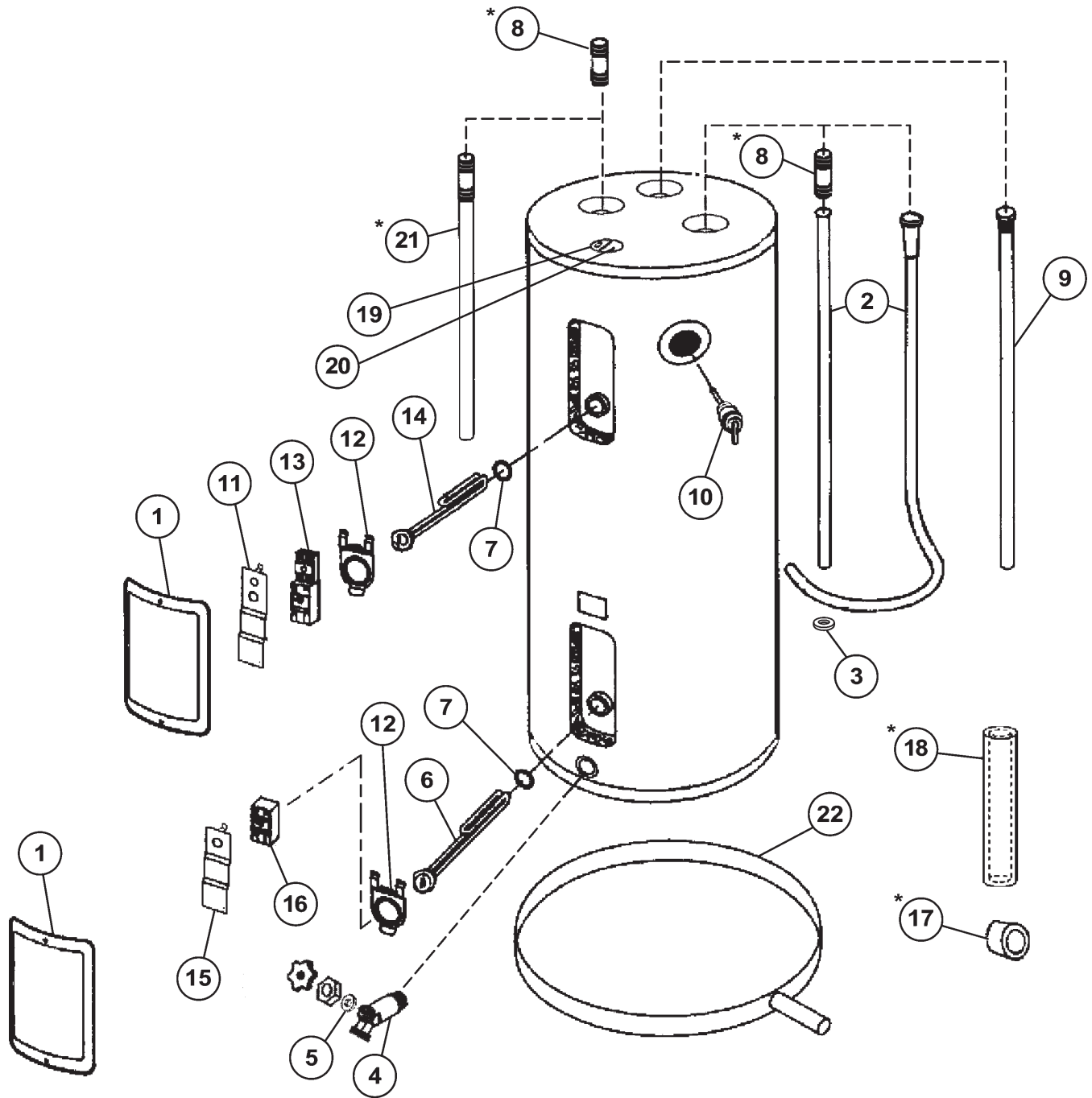
ELECTRIC

RESIDENTIAL WATER HEATER PARTS LIST
MODELS: 9 30, 40, 50, 66, 80 DKRT, 9 40, 50 DKRS

Series 909

MODELS: LT 50, 80 DLRT, LT 50 DLRS

Series LT



Reliance Water Heater Parts Fulfillment
125 Southeast Parkway, Franklin, TN 37068
1-800-527-1953
www.reliancewaterheaters.com

Item	Description	9 30 DKRT	9 40 DKRT
1	Access Panel	181260-000	181260-000
2	Dip Tube	183900-040	183900-052
3	Dip Tube Seal	184011-000	184011-000
4	Drain Valve	042037-003	042037-003
5	Drain Valve Washer (17/32" x 13/64" x 1/8")***	N/A	N/A
6	Lower Element	042285-025	042285-025
7	Element Gasket	0005300370	0005300370
8	Nipple w/Heat Traps*	184633-004	184633-001
9	Primary Anode Rod	183463-023	183463-023
10	T & P Relief Valve	043151-004	043151-004
11	Terminal Cover w/High Limit	183530-000	183530-000
12	Thermostat Bracket	184608-000	184608-000
13	Upper Thermostat w/High Limit	183534-000	183534-000
14	Upper Element	042285-025	042285-025
15	Terminal Cover	183529-000	183529-000
16	Lower Thermostat w/High Limit	183532-000	183532-000
17	T & P Insulation*	183256-000	183256-000
18	Pipe Insulation*	181639-003	181639-003
19	Junction Box Bracket w/CDT Hole	184659-000	184659-000
20	Junction Box Cover	184660-000	184660-000
21	Secondary Anode Outlet w/Heat Trap*	N/A	N/A
22	20" Dia. Plastic Drain Pan w/Side Drain*	9002842	9002842
	22" Dia. Plastic Drain Pan w/Side Drain*	9002843	9002843
	24" Dia. Plastic Drain Pan w/Side Drain*	9002844	9002844
	26" Dia. Plastic Drain Pan w/Side Drain*	9002845	9002845
23	Instruction Manual**	184652-001	184652-001

*If Applicable

** Not Illustrated

***Available at most hardware stores

9 50 DKRT

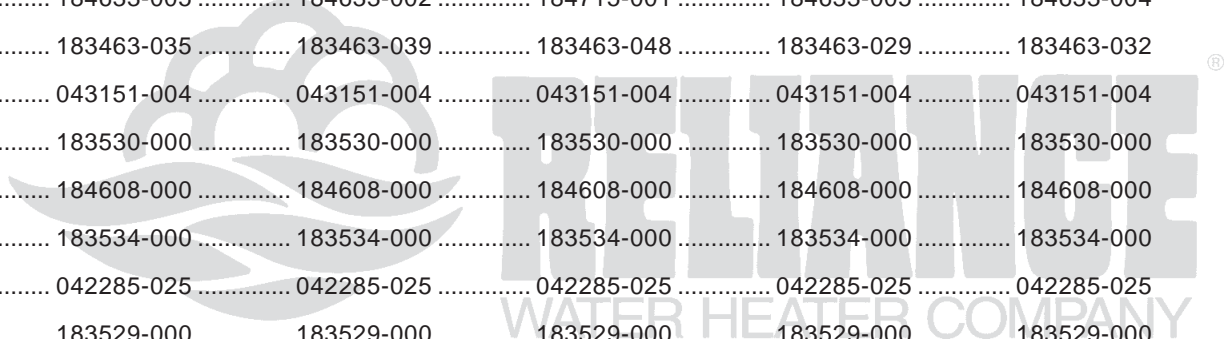
9 66 DKRT

9 80 DKRT

9 40 DKRS

9 50 DKRS

..... 181260-000 181260-000 181260-000 181260-000 181260-000
..... 183900-052 183900-052 183900-052 183900-036 183900-040
..... 184011-000 184011-000 184011-000 184011-000 184011-000
..... 042037-003 042037-003 042037-003 042037-003 142037-003
..... N/A N/A N/A N/A N/A
..... 042285-025 042285-025 042285-025 042285-025 042285-025
..... 0005300370 0005300370 0005300370 0005300370 0005300370
..... 184633-005 184633-002 184715-001 184633-005 184633-004
..... 183463-035 183463-039 183463-048 183463-029 183463-032
..... 043151-004 043151-004 043151-004 043151-004 043151-004
..... 183530-000 183530-000 183530-000 183530-000 183530-000
..... 184608-000 184608-000 184608-000 184608-000 184608-000
..... 183534-000 183534-000 183534-000 183534-000 183534-000
..... 042285-025 042285-025 042285-025 042285-025 042285-025
..... 183529-000 183529-000 183529-000 183529-000 183529-000
..... 183532-000 183532-000 183532-000 183532-000 183532-000
..... 183256-000 183256-000 183256-000 183256-000 183256-000
..... 181639-003 181639-003 181639-003 181639-003 181639-003
..... 184659-000 184659-000 184659-000 184659-000 184659-000
..... 184660-000 184660-000 184660-000 184660-000 184660-000
..... N/A N/A N/A N/A N/A
..... 9002842 9002842 9002842 9002842 9002842
..... 9002843 9002843 9002843 9002843 9002843
..... 9002844 9002844 9002844 9002844 9002844
..... 9002845 9002845 9002845 9002845 9002845
..... 184652-001 184652-001 184652-001 184652-001 184652-000



Item	Description	LT 50 DLRT	LT 80 DLRT	LT 50 DLRS
1	Access Panel	181260-000	181260-000	181260-000
2	Dip Tube	183901-052	183901-052	183901-036
3	Dip Tube Seal	184011-000	184011-000	184011-000
4	Drain Valve	042037-002	042037-002	042037-002
5	Drain Valve Washer (17/32" x 13/64" x 1/8")***	N/A	N/A	N/A
6	Lower Element	042541-030	042541-030	042541-030
7	Element Gasket	0005300370	0005300370	0005300370
8	Nipple w/Heat Traps*	184715-001	184715-001	184715-001
9	Primary Anode Rod	184635-816	184635-816	184635-816
10	T & P Relief Valve	043151-006	043151-006	043151-006
11	Terminal Cover w/High Limit	183530-000	183530-000	183530-000
12	Thermostat Bracket	184608-000	184608-000	184608-000
13	Upper Thermostat w/High Limit	183534-000	183534-000	183534-000
14	Upper Element	042541-030	042541-030	042541-030
15	Terminal Cover	183529-000	183529-000	183529-000
16	Lower Thermostat	183532-000	183532-000	183532-000
17	T & P Insulation*	183256-000	183256-000	183256-000
18	Pipe Insulation*	181639-003	181639-003	181639-003
19	Junction Box Bracket w/CDT Hole	184659-000	184659-000	184659-000
20	Junction Box Cover	184660-000	184660-000	184660-000
21	Secondary Anode Outlet w/Heat Trap*	N/A	N/A	N/A
22	20" Dia. Plastic Drain Pan w/Side Drain*	9002842	9002842	9002842
	22" Dia. Plastic Drain Pan w/Side Drain*	9002843	9002843	9002843
	24" Dia. Plastic Drain Pan w/Side Drain*	9002844	9002844	9002844
	26" Dia. Plastic Drain Pan w/Side Drain*	9002845	9002845	9002845
23	Instruction Manual**	184652-001	184652-001	184652-001

*If Applicable

** Not Illustrated

***Available at most hardware stores



Reliance Water Heater Parts Fulfillment
125 Southeast Parkway, Franklin, TN 37068
1-800-527-1953
www.reliancewaterheaters.com